

Office to let

Tati Center

Bucharest, Sector 5, Boulevard Tudor Vladimirescu, No. 45

Building information

Building status	Existing
Year of construction	2006
Parking ratio	1 / 100 sq m
Total building area	9 900 sq m

Commercial terms

Office space*	after login *
Parking	after login *
Service charge*	after login *
Minimum lease term	after login *
Availability	after login *

* Asking terms for m²/month

Location



Available space

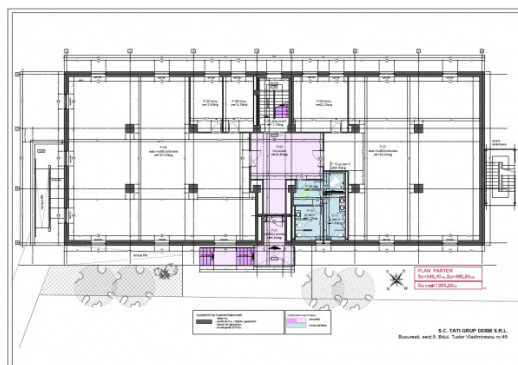
914 sq m

Available office space

250 sq m

Minimum office space

Typical floor plan



Available space

Floor	Vacant space	Availability
0 **	please contact us *	please contact us *
2	please contact us *	please contact us *
9	please contact us *	please contact us *
Total	after login *	

(**) Office-retail space

Public transport

Bus: 122, 126, 137, 138, 168, 178, 226, 268, 368

Tram: 1,8,11,25,47

Contact



+40 21 302 3400

More information